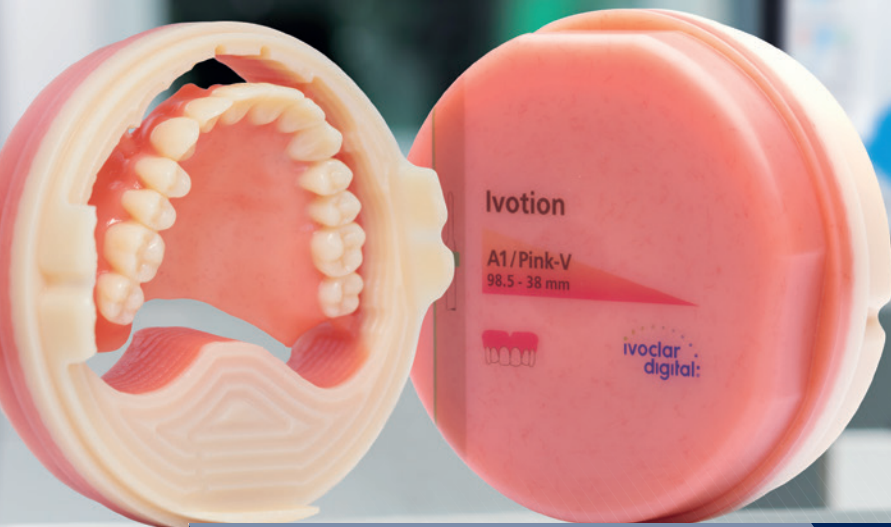


# Ivotion™ Denture System

*Truly efficient. Truly digital.*



**FAST  
PREDICTABLE  
PROCESS**

ivoclar  
digital®

# IVOTION™ DENTURE SYSTEM

Remarkably efficient digital production of complete dentures

The Ivotion Denture System offers a seamless and fast digital manufacturing process for fabricating high-quality removable dentures. Launched in 2015, the Digital Denture solutions from Ivoclar Vivadent are now incorporated in the Ivotion Denture System.

The integrated workflow involves both digital laboratory fabrication methods and established clinical treatment steps. An Ivotion Digital Denture is the ideal solution for many different applications in digital removable denture prosthetics.

Ivotion is at the center of this system. This new monolithic CAD/CAM disc features both tooth and denture base materials in one. Due to the disc's unique Shell Geometry, the system offers amazing efficiency.

## FAST

- Only a few manual working steps
- Hardly any disruption in the work process
- Plaster models are unnecessary
- Placement in the articulator is not required
- Fast tooth set-up due to extensive tooth libraries containing functional sample set-ups

## HIGH-QUALITY

- Premium PMMA material ensures high strength and biocompatibility
- No polymerization shrinkage or porosity of the material
- No thermal influences of the denture base material
- Ivotion does not require any bonding

## PREDICTABLE

- Reliable results for dental technicians, clinicians and patients
- Customized dentures
- Integrated workflow
- Standardized quality



# SEAMLESS WORKFLOW

From clinical treatment in the dental practice  
to digital fabrication in the laboratory

Within the Ivotion™ Denture System, the materials and process solutions from Ivoclar Vivadent are seamlessly combined with the scanning and software solutions of 3Shape. An exclusively developed design software together with coordinated and proven materials including special milling strategies and state-of-the-art PrograMill® milling machines promise exceptional reliability in planning and consistent, predictable results.

## ADVISE AND TREAT

Fast and precise clinical process with 3D Bite Plates including Gnathometer CAD, UTS CAD and Centric Tray

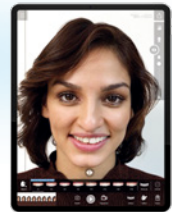
## DESIGN



Easy, intuitive design process with the 3Shape Dental System



Offer effective and comprehensible advice using IvoSmile®



## DECIDE



Monolithic process with Ivotion<sup>1</sup>



Alternative to Ivotion

Oversize process with Ivotion Dent<sup>2</sup> / Ivotion Dent Multi<sup>2</sup> and Ivotion Base<sup>3</sup> or conventional process with prefabricated teeth

## PRODUCE



Automated milling with PrograMill® PM7, PM5 and PM3

<sup>1</sup> Available with the introduction of the 3Shape Dental System 2020 software version

<sup>2</sup> former product name: SR Vivodent CAD and SR Vivodent CAD Multi

<sup>3</sup> former product name: IvoBase CAD

# CONVENTIONAL IMPRESSION TAKING

Proven clinical consultation and treatment methods:  
the basis for accurately fitting dentures

The Ivotion™ Denture System is based on Ivoclar Vivadent's long-standing expertise in removable denture prosthetics. An anatomical impression and a preliminary bite registration are taken as usual in the dental practice. Subsequently, a functional impression is made using a customized tray together with a conventional wax bite record.

These optional clinical instruments for preliminary bite registration, bite recording and functional impression taking have been specially developed for the Ivotion Denture workflow in order to ensure predictable results and reliable planning and treatment steps.



## Centric Tray

- Easy preliminary bite registration
- Compatible with UTS CAD
- Universal size

## UTS CAD

- Easy measurement of the angle of the occlusal plane in relation to the CP and BP and transfer to the design software



## Gnathometer CAD

- Easy and fast determination of the intraoral maxillo-mandibular position on CAD/CAM-fabricated 3D Bite Plates
- Multiple uses

# PATIENT-SPECIFIC DESIGN

Create your dentures with digital aids and other helpful tools

## EFFICIENT SCANNING

The Ivotion Denture System eliminates the need for fabricating time-consuming models, because the impressions are efficiently digitized with the 3Shape laboratory scanner.



## INTUITIVE DESIGN PROCESS

The digital dentures are individually designed and customized with the intuitively operated 3Shape Dental System. The system features extensive tooth libraries in addition to sample tooth set-ups, morphing tools, various set-up functions and the latest gingiva designs.

The exclusive workflows from Ivoclar Vivadent are fully integrated in the CAD software of the 3Shape Dental System and are available to all users of the "Removable" and "Complete" software packages.



# EASY AND EFFICIENT

Choose the monolithic process featuring the innovative Ivotion disc

The new Ivotion™ disc allows you to fabricate monolithic removable dentures by means of an efficient digital workflow. Complete dentures are milled from one disc in one milling process and with only a few manual working steps. This is in accordance with the product slogan: One disc. One milling process. One denture.

## One disc

Ivotion combines a proven highly cross-linked PMMA tooth material with a premium denture base material. The disc is available in the following tooth shades: A1, A2 and A3. In addition, Ivotion features the gingiva shades Preference and Pink-V.



## One continuous milling process

After the complete denture has been designed, the monolithic restoration is quickly milled in an uninterrupted milling process in a PrograMill® milling machine.



## Only polishing required

The manual working steps are reduced to a minimum: The milled denture only needs polishing.

Picture: Monolithic denture, Ivotion  
E. Kukucka, Denturist, Canada

**DESIGN. MILL.  
FINALIZE.**

A minimum of manual working steps in the fabrication of customized monolithic complete dentures: Ivotion is the key to amazing efficiency.

The technical manual and the video tutorials on the Ivotion Denture System contain detailed descriptions and recommendations.

Learn more: [ivoclarvivadent.com](http://ivoclarvivadent.com)

## DATA-BASED SHELL STRUCTURE – THE CORE OF IVOTION

The unique Shell Geometry is located within the Ivotion™ disc. The Shell Geometry is a data-based, three-dimensional tooth and dental arch structure which is designed for fabricating upper and lower dentures. This innovative technology allows customized complete dentures to be milled in one operation.<sup>1</sup>

<sup>1</sup> In very rare cases (e.g. very large dental arches), the Shell Geometry of Ivotion will not provide a suitable solution. In such cases, the established oversize process is recommended.



### Based on sound data

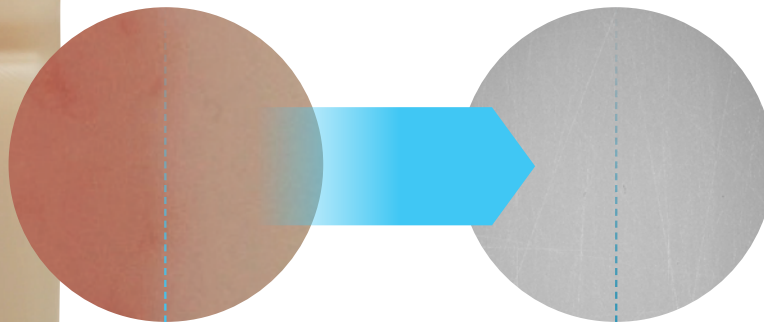
The Shell Geometry is based on the data gathered from a wide range of real clinical cases. A large number of time-tested complete dentures that are still in service were analyzed and a common denominator was established, which resulted in the development of the Shell Geometry.

### A template for individualized dentures

The Shell Geometry is located within the disc, where it defines the transition between the tooth and the denture base parts of the disc.

### The basis for customized complete dentures

In the intuitive CAD design process, the dentures are customized to the patient's needs with the help of the Ivotion tooth library and the innovative Shell Geometry. This digital technique allows you to fabricate dentures for a wide range of jaw shapes and sizes.



### Truly monolithic

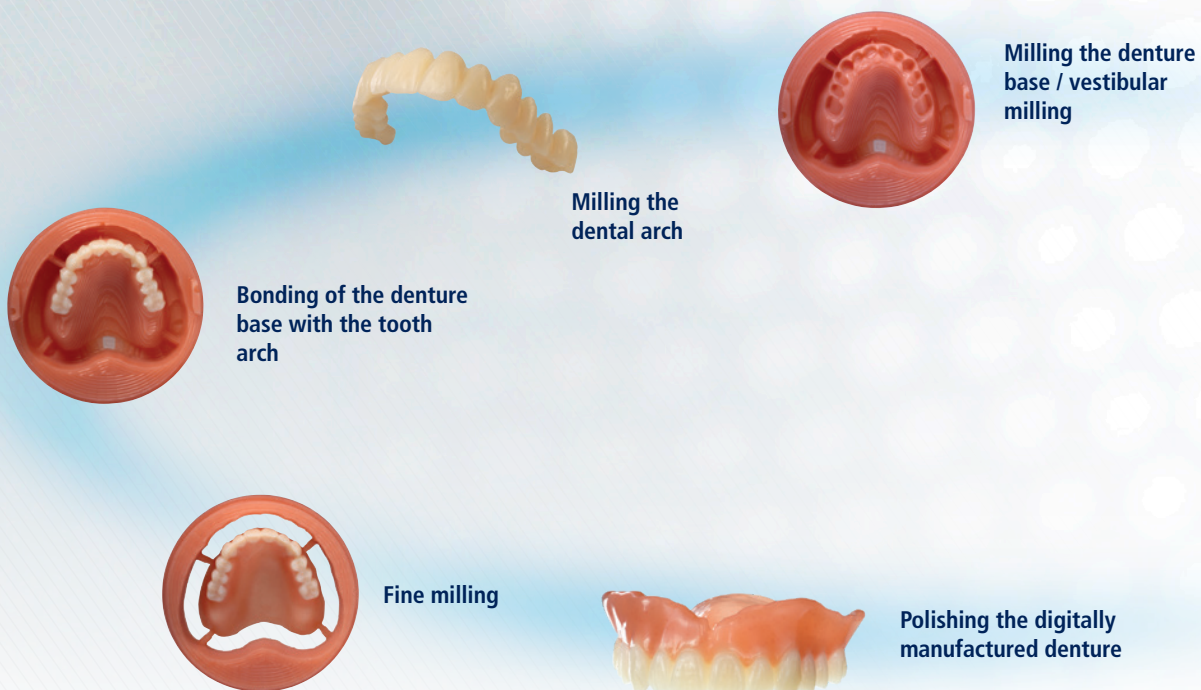
A state-of-the-art manufacturing process produces a tight chemical bond between the two materials to produce a smooth transition and a stress-free monolithic disc as shown in the SEM image. As a result, the material shows uniform strength throughout the entire disc.



# FLEXIBLE AND ESTHETIC

## Choose the oversize process featuring the Ivotion Base and Ivotion Dent discs

Two Ivotion™ discs comprised of high-quality tooth and denture base materials are available for the fabrication of removable dentures using the oversize technique (e.g. for very large dental arches). This manufacturing process is characterized by exceptional individuality and flexibility: It enables you to tackle the most challenging cases.



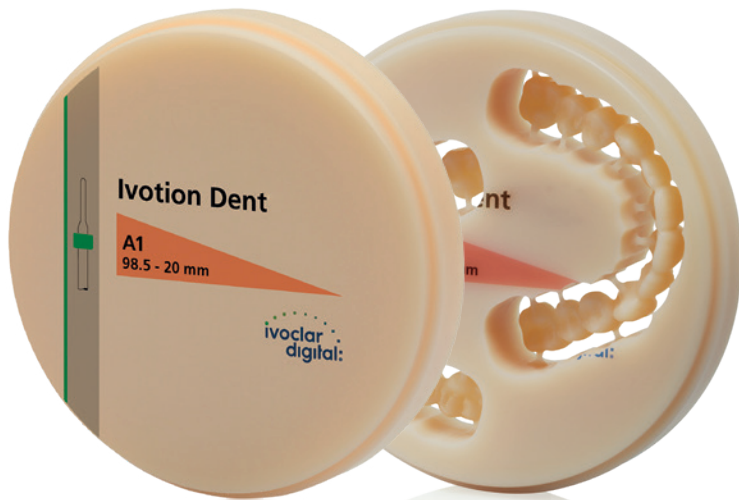
The Ivotion Base<sup>1</sup> discs are made of a high-impact strength denture base material.

The shade range is coordinated with that of the denture base materials from Ivoclar Vivadent and includes the most popular shades. The denture bases can be esthetically customized and characterized with SR Nexco.<sup>®</sup>

- Thickness: 30 mm
- Shades: Pink, Pink-V, Preference and 34-V

<sup>1</sup> former product name: IvoBase CAD





The Ivotion™ Dent<sup>1</sup> discs are made of tooth-colored, monochromatic DCL material.

They are characterized by outstanding translucency and lifelike fluorescence. Three main factors are responsible for the esthetic outcome: low opacity in combination with the anatomic shape of the anterior teeth and a natural-looking surface texture.

- Thickness: 20 mm
- Shades: BL3, A1, A2, A3, A3.5, B1, B3, C2, D2



The Ivotion Dent Multi<sup>2</sup> discs are made of polychromatic DCL material.

The innovative Pearl Structure Effect produces a harmonious progression of the shade within the disc, which imparts the denture teeth with exceptional esthetic properties. The polychromatic discs are made up of three layers (incisal, dentin, cervical) just as natural tooth structure. Therefore, dentures produced with Ivotion Dent Multi are ready to use: They do not require any time-consuming additional characterization.

- Thickness: 20 mm
- Shades: BL3, A1, A2, A3, A3.5, B1, B3, C2, D2



Ivotion Bond<sup>3</sup> generates a strong bond between milled or prefabricated denture teeth and machined denture bases:

- Pre-dosage ensures clean work procedures
- Strong bond
- Universal pink color matches the denture base

<sup>1</sup> former product name: SR Vivodent CAD

<sup>2</sup> former product name: SR Vivodent CAD Multi

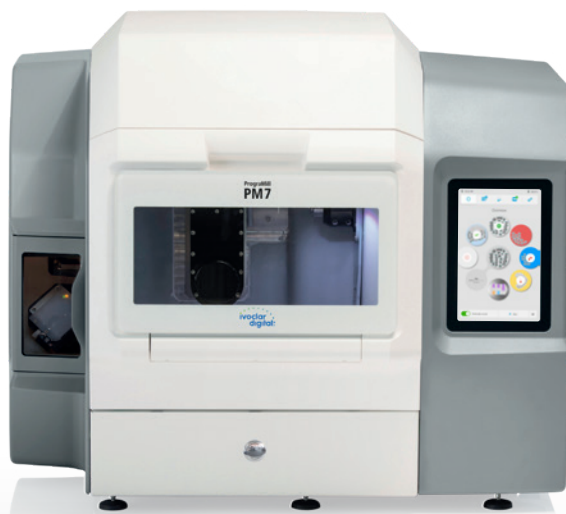
<sup>3</sup> former product name: IvoBase CAD Bond

# FAST PRODUCTION

Mill your digital dentures with the coordinated PrograMill® machines

The materials, the CAD and CAM software and the milling machines all work together smoothly to produce high-precision dentures of the finest quality: The precision machines of the PrograMill® range (PM7, PM5 and PM3) and the established Zenotec® Select System are suitable for all of the manufacturing options of the Ivotion Denture System.<sup>1</sup>

<sup>1</sup> The Ivotion Base, Ivotion Dent and Ivotion Dent Multi discs may also be machined with inLab MC X5 from Dentsply Sirona.



## BRILLIANT AND POWERFUL WITH PrograMill PM7

- Integrated ionizer to minimize cleaning
- Automatic self-cleaning with the Active Air Suction feature
- Fully automatic materials management
- 8-material changer for uninterrupted manufacturing of eight digital dentures, e.g. over night

# VERSATILE APPLICATIONS

## Benefit from the versatile applications in removable denture prosthetics

Removable denture prosthetics is a fascinating dental field, which has always been of great interest to Ivoclar Vivadent. The Ivotion Denture System for digital denture prosthetics complements the well-known BPS System and the wide range of products available for conventional denture prosthetics from Ivoclar Vivadent.

**Individual complete dentures** (upper or lower jaw)

**Complete dentures** (upper and lower jaw)

**Duplicate complete dentures** (upper and lower jaw)

**Immediate complete dentures** (upper and lower jaw)

**Overdentures with two attachments** (upper and lower jaw)



Ivotion Denture System

Ivoclar Vivadent furthermore offers comprehensive solutions for partial denture prosthetics (upper and lower jaw)



# DIGITAL EXPERTISE UNDER ONE ROOF

Ivoclar Digital is a competent digital partner, which supports dentists and dental technicians along the entire digital process chain. A great deal of importance is placed on simple and understandable procedures. The portfolio for the digital work process is divided into four areas:

## CONSULT

IvoSmile®, the innovative software application based on augmented reality, supports the dialogue between dental professionals and their patients

## DESIGN

Versatile scanners, intuitive design software from our partners and exclusive add-ons

## DECIDE

High-performance materials such as IPS e.max® – the world's most used all-ceramic system<sup>(1)</sup>

## PRODUCE

Technologically high-quality equipment for the production of esthetic restorations

→ Connected to you

## ivoclardigital.com

Call us toll free at 1-800-533-6825 in the U.S., 1-800-263-8182 in Canada.  
© 2020 Ivoclar Vivadent, Inc. Ivoclar Vivadent, Ivoclar Digital, Ivotion, IvoSmile, Vivodent, IvoBase, Nexco, PrograMill, Zenotec and IPS e.max are registered trademarks of Ivoclar Vivadent, Inc. 3Shape, inLab MC X5, and Dentsply Sirona are not registered trademarks of Ivoclar Vivadent, Inc.  
746215EN Rev. 1 08/2020 13523

**United States**  
175 Pineview Drive  
Amherst, New York 14228  
716-691-0010  
800-533-6825  
Fax: 716-691-2285  
www.ivoclarvivadent.com

**Canada**  
1 - 6600 Dixie Road  
Mississauga, Ontario L5T 2Y2  
905-670-8499  
800-263-8182  
Fax: 905-670-3102  
www.ivoclarvivadent.com

